

studipinelements@gmail.com

+91 9167016700

+91 9769026387






Anushri Shetty

Principal Architect

A graduate of Rachana Sansad's Academy of Architecture batch of 2021, she secured 1st rank in her final year Design Dissertation.

At Architecture BRIO, where she worked for over two and a half years, Anushri honed her understanding of sustainable and context-sensitive architecture. Her time at DesignHex further shaped her expertise in spatial storytelling and interior design. Her work has received national and international recognition—she represented India at the London Design Biennale 2021 and led her team to win the Mumbai Metro Line 3 Station Design Competition.

With a top-20 national rank in NATA (National Aptitude Test in Architecture) and a strong foundation in both architecture and interiors, she brings a thoughtful, holistic approach to every project.

 studioelements@gmail.com
+91 9769026387




Maitri Uka

Principal Architect

A sustainability-driven architect with a Master's in Advanced Ecological Buildings and Biocities (MAEBB) from the Institute for Advanced Architecture of Catalonia, with a focus on regenerative and climate-responsive design. Professional experience spans roles at Architecture BRIO and SEARCH Architecture and Landscape, where she engaged deeply with ecological design and landscape integration. At Scaled Robotics, she explored technology-driven workflows in architecture. She was part of the team that earned Special Recognition from the Design Educates Awards for The Voxel: A Quarantine Cabin, a project focused on self-sufficient living systems. She has also completed the Bamboo U Online Immersion Course, adding to her knowledge of sustainable, natural building materials.

She brings a forward-thinking approach that blends technical precision with environmental consciousness.

 studioelements@gmail.com
+91 9167016700

EP1225

Commercial Office
October 2024-Feb 2025

Brief: A Client facing office for a laptop distributor
Location: Chembur, Mumbai
Area: 1200 sqft

Designed and executed in just five months on a tight budget, this 1200 sqft office balances function and style.

Cost-effective materials like tiles and laminates were used throughout, while marble was selectively added to elevate key areas. Arched manager cabins, green dividers, and fluid accent walls create a sense of openness and cohesion, enhanced by natural light and warm wood tones.



Contemporary workspace with wood-accented cabins, arched black frames, and clean, minimalist desks in a soft, neutral palette.



A stylish reception nook with a striped marble counter, warm wood accents, herringbone tile flooring. A contemporary mandir stays in line with the design language of the entire office.



Cozy reception area with soft tones, circular wall cutouts and warm wood



Sleek workspace with wooden partitions, black-framed arches, green dividers, and modern décor accents.



Open-plan workspace with soft green accents, curved wall shelving, and light wood desks creating a playful yet professional vibe.



The curved wall shelving was a last-minute addition to elegantly showcase our client's awards.



A sculptural conference table framed by artistic pendant lights for a refined, modern touch



Managerial cubicles defined by elegant arched frames offer a sense of privacy while maintaining visual openness, enhancing both hierarchy and spaciousness within the office.



A striking, Escher-like repetition of framed cubicles creates a rhythmic visual depth—balancing separation with a harmonious sense of spatial unity.

The Seed

Residential
May 2023-December 2023

Brief: Residential Home
Location: Gamdevi, Mumbai
Area: 1050 sqft

Set in a heritage neighborhood of South Mumbai, this renovated family home blends old-world charm with contemporary living.

Inspired by traditional Kutchhi Bhungas, the design features lime-plastered walls, hand-shaped niches, rounded edges, and subtle inlay work. Embracing local materials and techniques, the home reflects its lush surroundings—mango and jackfruit trees—through cross-ventilated windows and organic textures. Designed for a modern Kutchhi Gujarati family, the space is timeless yet future-ready, celebrating cultural nuances while offering all modern comforts.



The living room blends mid-century modern furniture with lime-plastered walls, reflecting greenery from outside while evoking the serene charm of traditional Kutchhi homes.



The entrance showcases rich wooden paneling, wicker lighting, and a marble inlay door—blending traditional craftsmanship with a soft, contemporary elegance.



Textured lime plaster walls, earthy tones, and handcrafted elements come together to create a calming living space



The dining area features arched niches inspired by Kutchhi Bhungas, complemented by a marble-top table



The bedroom embraces soft textures, handcrafted details, and expansive windows that frame treetop views



Woven cane shutters, terracotta wall plates, and large open windows infuse this bedroom with artisanal warmth



A cozy, light-filled bedroom with built-in seating, leafy views, and soft tones



The kitchen pairs fluted glass shutters with warm wood cabinetry and a crisp white counter, offering a refined, efficient space grounded in traditional materials and detail.



Subtle arched impressions and delicate brass inserts on the wall nod to traditional craftsmanship.

LL - ONG

Commercial
Ongoing

Brief: Lobby
Location: Lodha Supremus, Lower Parel
Area: 2500 sqft

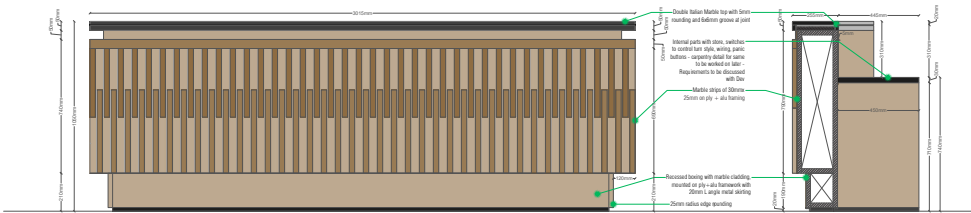
The Lodha Supremus lobby refresher project in Lower Parel is a design-led initiative to elevate the existing space while adhering to a tight timeline. Currently in the design stage, the goal is to create a welcoming yet professional atmosphere that reflects the building's premium commercial positioning. The clients envision a space that balances functionality with aesthetic upgrades—through strategic use of lighting, materials, and spatial zoning. Our approach integrates modern design sensibilities with minimal disruption to daily operations. This ongoing project focuses on delivering a refreshed identity that aligns with Lodha's brand ethos and enhances the overall visitor experience.



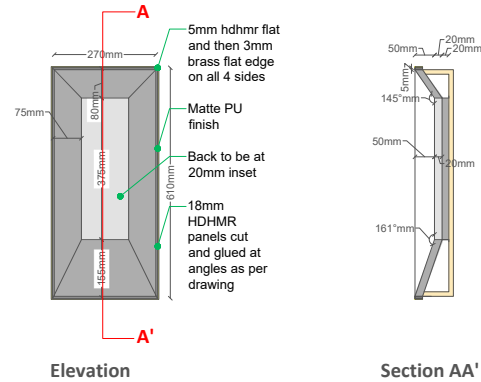
A refined lobby visual showcasing a bold geometric marble inlay floor, textured stone walls, and a sleek reception counter framed by warm lighting and a mirrored ceiling.



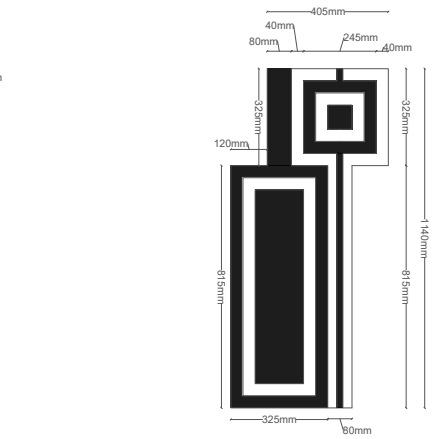
Material Boarding



Reception table Detail



Wall Cladding Detail



Flooring Detail



Lobby Design option with a wood and backlit onyx reception.



Lobby Design option with a red traveertine and black porto marble reception.



Lobby design option in wood strips and black porto marble.



Lobby design option with fluted textures, scalloped paneling, and warm wood tones



Lobby option featuring a bold red travertine reception desk, suspended disc lights, and a textured backdrop

KN - ONG

Residential Ongoing

Brief: Residential home
Location: Kankia Silicon Valley, Powai
Area: 1200 sqft

This 1200 sqft residence in Powai, embraces serene minimalism with earthy sophistication. A soft neutral palette of beige, cream, and natural wood is paired with organic textures like cane, jute, and solid woodwork. The open-plan layout seamlessly connects the living, dining, and kitchen areas, creating an airy, expansive feel. Clean-lined, low-profile furniture enhances spatial flow, while large windows invite natural light and frame stunning views. Woven pendant lights and warm accents lend a cozy elegance. Blending modern minimalism with rustic charm, the space is thoughtfully designed for comfort, calm, and functionality—an inviting retreat in the heart of Mumbai.



A sunken living area with inbuilt seating and wooden blinds adds intimacy to the open layout.



An inviting open-plan layout featuring a cozy living area, modern kitchen, and elegant dining nook



A warm, open kitchen with rattan cabinetry and textured stone surfaces seamlessly flows into the living area



Primary bedroom with panoramic views, a custom wood-and-marble screen headboard, and soft layered textures for a restful, grounded vibe.



Compact guest bedroom featuring a custom Murphy bed with concealed storage, warm wood accents, and expansive views for a multifunctional, space-saving layout.



Bed and sidetables being prepared on site



Marble work on site for balcony flooring and the kitchen island

CQ - ONG

Residential Ongoing

Brief: Residential home
Location: Classique, Juhu
Area: 1500 sqft

Located in Classique, Juhu, this thoughtfully designed 200 sqft, 3-bedroom residence blends warmth and function with contemporary finesse. Natural light floods the space, highlighting warm wood tones, textured finishes, and custom-built storage solutions. A lowered living area creates an inviting nook for conversation, while the round dining table anchors the open layout. Each bedroom features distinct design identities—ranging from minimalist to vibrant—with clever use of material palettes and soft furnishings. Custom wardrobes, layered lighting, and multifunctional furniture maximise utility without compromising on style. The design maximizes storage while working within a tight budget, using smart solutions and spatial efficiency.



A sunken living area with inbuilt seating and wooden blinds adds intimacy to the open layout.



A round dining table anchors the open-plan space, fostering connection between living, dining, and kitchen zones.



Floor-to-ceiling windows and a sculptural lamp create a serene nook bathed in natural light.



A cozy sunroom-library hybrid with vibrant shelving and lush greens invites quiet reading and daydreaming.



Soft textures and minimal detailing create a calm, light-filled bedroom designed for rest and reflection.



A neutral palette and sculptural mirror elevate this simple, functional bathroom into a refined retreat.



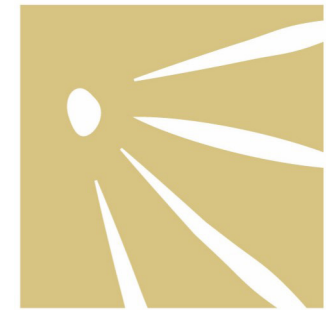
Textured green tiles and a floating vanity bring character and efficiency to this compact, light-filled bathroom.



Carcass for kitchen and wardrobes being prepared on site



Tilework ongoing in bathrooms on site



in • elements

studioinelements@gmail.com
+91 9167016700
+91 9769026387

